



### Wordle

O	P	E	N	S
T	R	U	S	S
A	B	Y	S	S
A	M	A	S	S



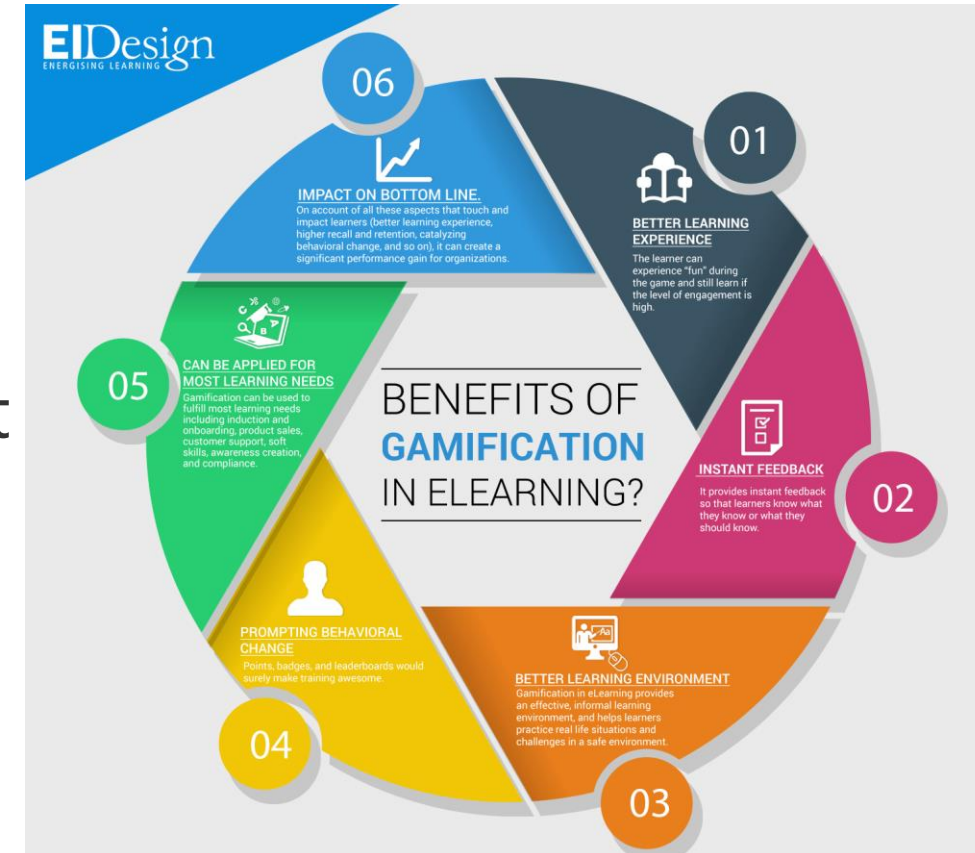
# Gamified Learning



Ray Deatherage, *Director of Education & Training*  
NextGen Training Consortium | October 1, 2024

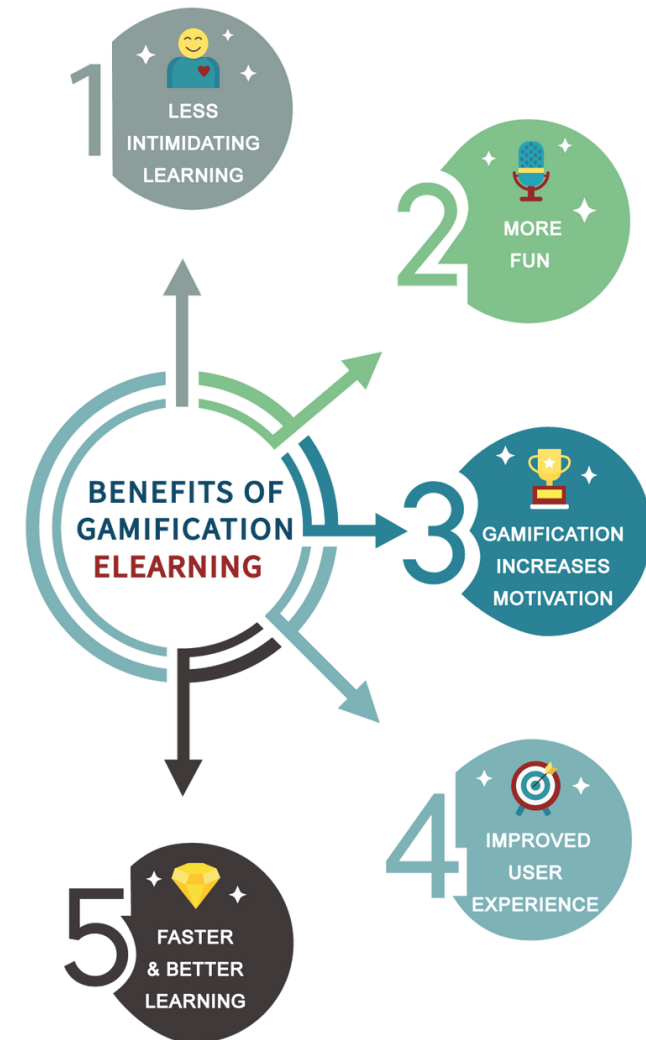
# Meeting Agenda

- Benefits of Gamified Learning
- Use Cases of Gamified Learning
- Features of Gamified Learning
- Types of Learning Games in Development
- Overview of Developed Learning Games
- NextGen Website Overview
- Open Forum Q&A



# Benefits of Gamified Learning

- Increased Engagement
- Improved Retention
- Instant Feedback
- Healthy Competition
- Motivation and Progress Tracking
- Increased Collaboration
- Customizable and Flexible



# Use Cases of Gamified Learning

- Safety Training and Compliance
- Emergency Response Drills
- Overview of Game Concepts
- Compliance and Regulatory Audits
- Maintenance and Inspection Training
- Gas Leak Detection and Repair
- Soft Skills Training (Communication and Leadership)
- Onboarding New Employees
- Operational Efficiency Training



# Features of Gamified Learning

- Points Awarded
- Badges Earned
- Timed Answers
- Development Tool – Articulate 360
- Content Distribution
  - Mobile Devices
  - Learning Management System (LMS)



## Leak Investigation

**Welcome** to this gamified micro-module on Leak Investigation.

You will be presented with a scenario, and you will need to answer questions related to the scenario to the best of your understanding.

You need to answer each question in 20 seconds and based on your answers, you will gain points. At the end of this micro-module, you will earn a final score and a badge!

You can gain between 15-60 points and based on the points, you could get the following badges:

★★★★★  
Champion

★★★★★  
Lead

★★★  
Enthusiast

*Click the scenario given below to continue.*

Responding to a gas odor complaint



Your score **0**

Development using Storyline's 360 features produces SCORM-wrapped experiences for an LMS

# Types of Learning Games in Development

- **Energy Enlightenment** = Jeopardy theme
- **Pipeline Peril** = Hangman theme
- **Renewable Recall** = Memory Match theme
- **Sustainable Sorter** = Click and Drag theme
- **Who wants to be an Energy Expert?** = Who wants to be a Millionaire? theme
- **Energy Ops: Critical Decisions** = Scenario Based themes



# Pipeline Peril Example (aka Hangman)

- **Useful for:** Teaching and reinforcing key terms, industry jargon, or subject-specific vocabulary.
- **Example:** In technical fields like natural gas, it can be used to help employees learn critical safety terms, equipment names, or regulatory terminology.

Welcome to the **Pipeline Peril** game!

In this game, you will be presented with a **series of questions**. Click the letters to enter the correct answer into the **blanks**.

You have up to **10** minutes to identify the **10** answers correctly. Monitor the **Pressure Gauge** to find out how accurately you are answering. You can earn points and a suitable **title** at the end of the game.

---

Titles


<b>Beginner</b> ★★	<b>Enthusiast</b> ★★★	<b>Specialist</b> ★★★★	<b>Expert</b> ★★★★★
-----------------------	--------------------------	---------------------------	------------------------

Good luck!

*Click **Tutorial** if you need to understand how to play the game. Or click **Start Game**.*

TutorialStart Game

# Pipeline Peril Example (aka Hangman)



Pipeline Peril

Score **-3** Time: **0 : 23**


Q1: What does L.E.L stand for

L O W E S    E X    L O S    V E    L

Q W E R T Y U I O P  
A S D F G H J K L  
Z X C V B N M

Used letters  
LOWESVXGFN

Pause



70 psi

losing pressure



# Energy Enlightenment Example (aka Jeopardy)

Welcome to the **Energy Enlightenment** game!

The game is designed to test your memory and knowledge of key concepts related to natural gas.

Select questions, from the grid, arranged according to point values and topics.

You may pick questions from the grid in any order. Every correct answer will earn **Points** towards achieving a **Title**. The more points, the higher the title.

You have a maximum time limit of **10 minutes** to answer **25 questions**.

Challenge your memory, expand your knowledge, and seek **Energy Enlightenment**.

Titles

Beginner



Enthusiast



Specialist



Expert



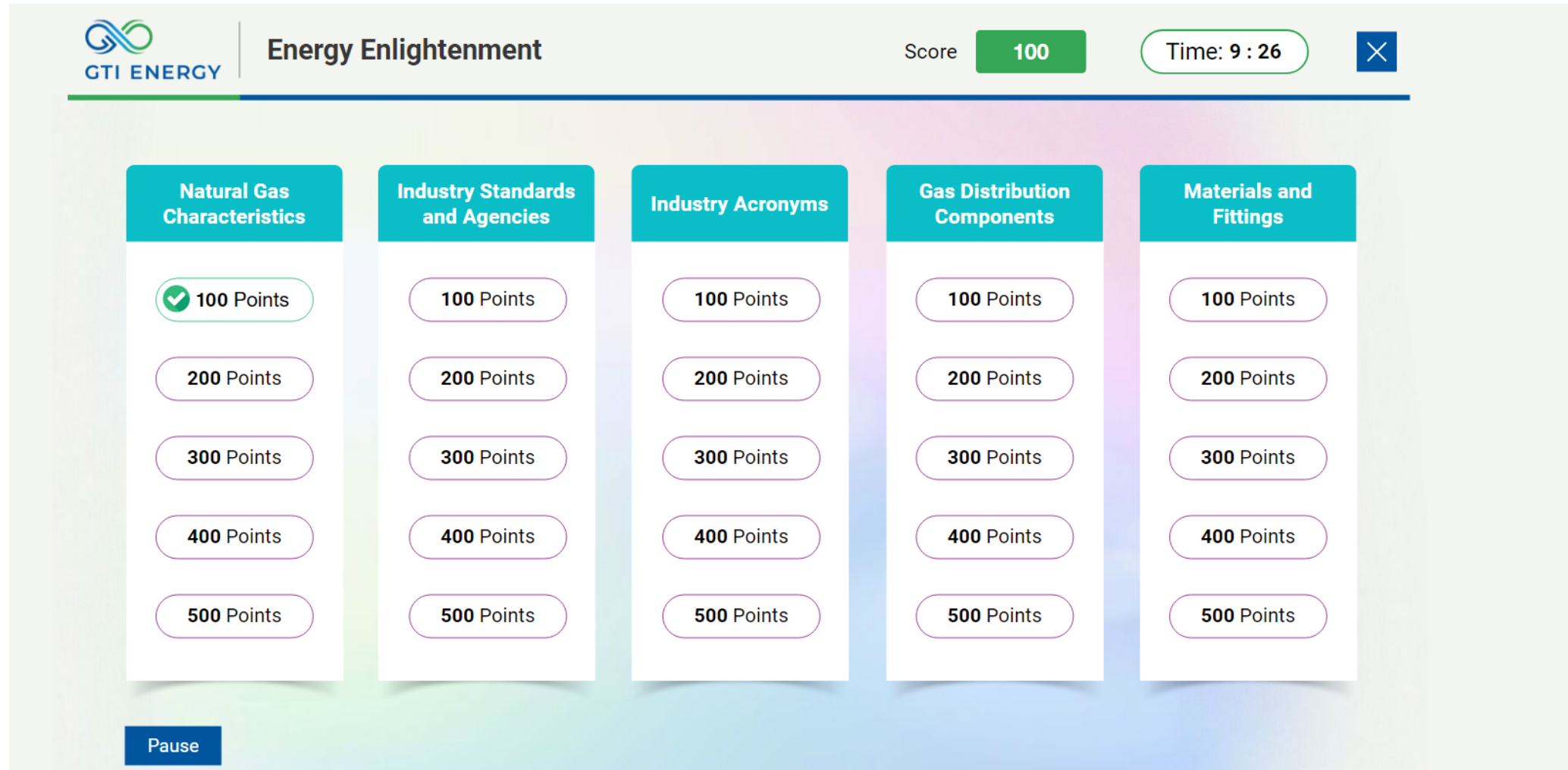
Good luck!

Click **Tutorial** for additional game instructions or click **Start Game**.

Tutorial

Start Game

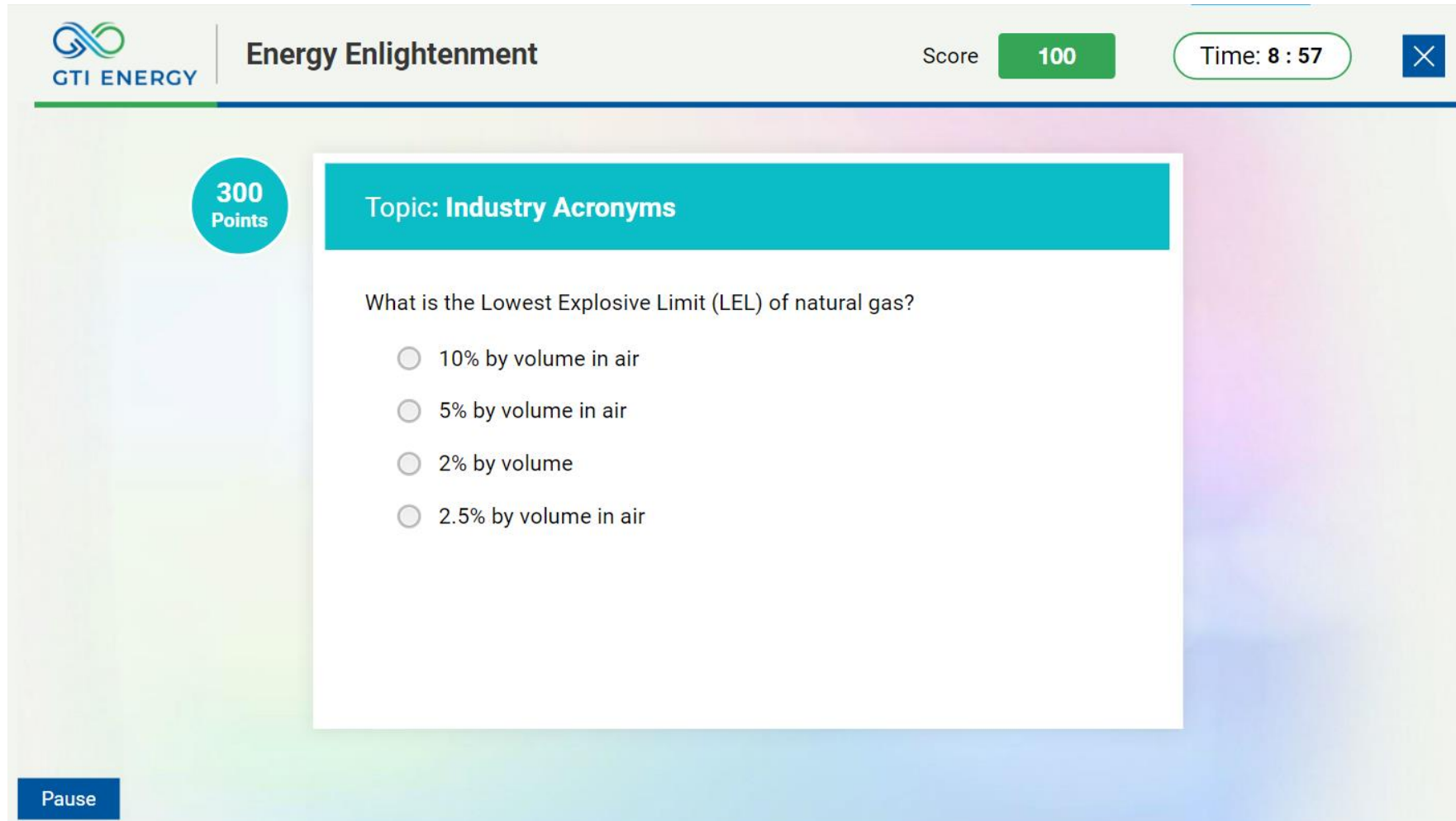
# Energy Enlightenment Example (aka Jeopardy)



The screenshot shows the 'Energy Enlightenment' game interface. At the top left is the GTI ENERGY logo. The title 'Energy Enlightenment' is centered at the top. To the right, the 'Score' is 100 and the 'Time' is 9:26. A close button (X) is in the top right corner. The game board consists of five columns representing different categories: 'Natural Gas Characteristics', 'Industry Standards and Agencies', 'Industry Acronyms', 'Gas Distribution Components', and 'Materials and Fittings'. Each column has five jeopardy-style questions with point values of 100, 200, 300, 400, and 500. The 100-point question in the 'Natural Gas Characteristics' column is selected and marked with a green checkmark. A 'Pause' button is located at the bottom left of the game board.

Category	100 Points	200 Points	300 Points	400 Points	500 Points
Natural Gas Characteristics	✓ 100 Points	200 Points	300 Points	400 Points	500 Points
Industry Standards and Agencies	100 Points	200 Points	300 Points	400 Points	500 Points
Industry Acronyms	100 Points	200 Points	300 Points	400 Points	500 Points
Gas Distribution Components	100 Points	200 Points	300 Points	400 Points	500 Points
Materials and Fittings	100 Points	200 Points	300 Points	400 Points	500 Points

# Energy Enlightenment Example (aka Jeopardy)



The screenshot shows a Jeopardy-style game interface. At the top left is the GTI ENERGY logo. The title "Energy Enlightenment" is centered at the top. On the right, the score is "100" in a green box, and the time is "8 : 57" in a rounded box with a close button. On the left side, a circular badge indicates "300 Points". The main question area has a teal header "Topic: Industry Acronyms" and asks "What is the Lowest Explosive Limit (LEL) of natural gas?". Below the question are four radio button options: "10% by volume in air", "5% by volume in air", "2% by volume", and "2.5% by volume in air". A "Pause" button is located at the bottom left of the game area.

GTI ENERGY | Energy Enlightenment | Score 100 | Time: 8 : 57

300 Points

Topic: Industry Acronyms

What is the Lowest Explosive Limit (LEL) of natural gas?

- 10% by volume in air
- 5% by volume in air
- 2% by volume
- 2.5% by volume in air

Pause

# Scenario Based Gamification Example



## Leak Investigation

**Welcome** to this gamified micro-module on Leak Investigation.

You will be presented with a scenario, and you will need to answer questions related to the scenario to the best of your understanding.

You need to answer each question in 20 seconds and based on your answers, you will gain points. At the end of this micro-module, you will earn a final score and a badge!

You can gain between 15-60 points and based on the points, you could get the following badges:

★★★★★  
Champion

★★★★  
Lead

★★★  
Enthusiast

*Click the scenario given below to continue.*

Responding to a gas odor complaint

★★★★★

Your score **0**

# Scenario Based Gamification Example

Q1

You have just arrived at a reported inside gas leak from a customer and smell a strong odor of gas as you exit the vehicle.

Take 20 seconds to evaluate the question and select the best course of action from the options given below.

Immediately start performing an outside leak investigation without making contact with the customer.

Immediately make contact with the customer to determine if there is hazardous accumulation of gas within their premise. ✓

Immediately start reviewing facility maps to locate the underground main line and service line valves to close them.

Next

This is the best choice. The customer reported an inside gas leak, there could be a hazardous concentration of gas within their premise.

20



# Scenario Based Gamification Example

Q2

You have made contact with the customer reporting the "inside" gas odor and have determined there is no gas leak inside their premise or any immediate hazard to life and property.

You have determined the outside gas odor, was the cause of the inside gas odor complaint. What is the next step you should take?

*Take 20 seconds to evaluate the question and select the best course of action from the options given below.*

Complete the necessary documentation for the inside gas odor investigation and go enroute to your next order on the other side of town.

Conduct an outside leak investigation after your lunch break.

Immediately conduct an outside leak investigation to locate the source of the strong gas odor.

1

Timer

Submit

20



# Scenario Based Gamification Example

Q3

You have located the gas leak. It's below ground on a steel service riser at the foundation wall across the street from the initial inside gas odor complaint.

What is the next step you should take?

*Take 20 seconds to evaluate the question and select the best course of action from the options given below.*

Complete the necessary leak ticket and provide specific details on where the outside leak is located so a gas company crew can follow-up the next day and repair the gas leak.

Make immediate entry into the customer's premise where the gas leak is located to determine if the gas leak at the foundation wall is migrating indoors.

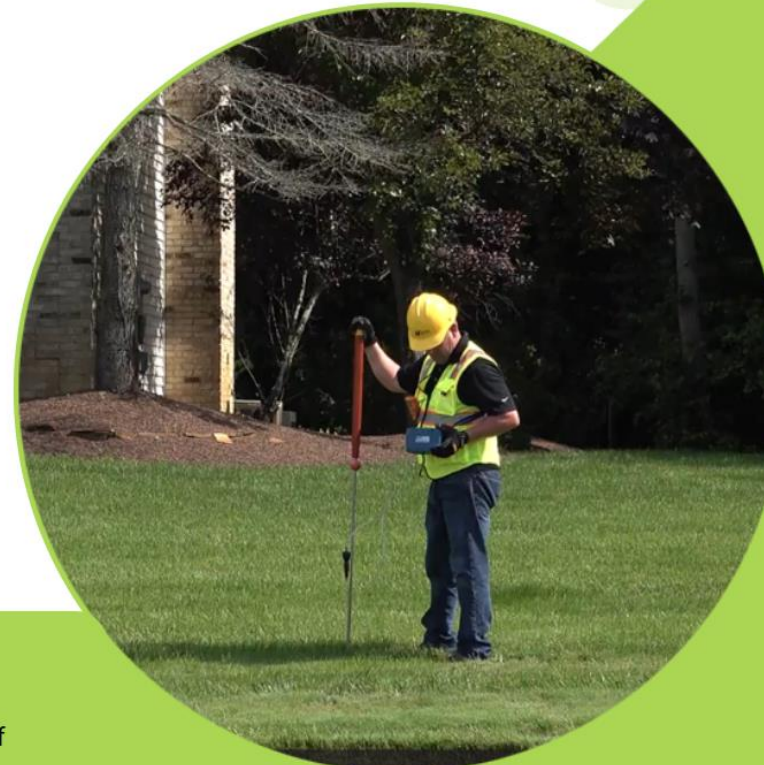
Standby in your company vehicle until additional personnel arrive to help repair the gas leak.

A gas leak located at the foundation wall of a customer's premise must be addressed immediately. These types of leaks can migrate inside a customer's premise and create hazardous accumulations of gas.

20

0

5



# Scenario Based Gamification Example





# Scenario Based Gamification Use Cases

- Practical Application of Skills
- Decision-Making and Problem-Solving
- Critical Thinking
- Safety and Risk Management
- Soft Skills Development
- Situational Awareness
- Compliance and Regulatory Training
- Compliance and Regulatory Training
- Handling Complex and High-Stakes Situations
- Behavioral and Attitudinal Change
- Customer Service and Client Interaction
- Leadership and Management Development
- Crisis and Emergency Preparedness

# Introducing the new NGTC website!

- Live demonstration of the website being developed
- **Link:** <https://www.gti.energy/training-events/digital-immersive/ngtc>



Focus Areas Services & Capabilities Training & Events About Working with Us Contact



## Participate in a monthly training consortium facilitated by GTI Energy

GTI Energy aims to foster community engagement with professionals in the energy industry and discuss all things related to advancing workforce development initiatives. To learn about new training needs within the industry and how to address them, GTI Energy is offering the NextGen Training Consortium (NGTC). This consortium will focus on using digital and immersive technologies in developing the next generation of products and services for education and training.



**GTI ENERGY**

*solutions that transform*

*Questions?*



**GTI ENERGY**

*solutions that transform*

*Thank you!*

Ray Deatherage  
[rdeatherage@gti.energy](mailto:rdeatherage@gti.energy)